
Olam Food Ingredients
Cocoa & Forests Initiative
2020 Progress Report

Côte d'Ivoire and Ghana

Foreword



ANDREW BROOKS
HEAD OF COCOA SUSTAINABILITY, OFI

To create a sustainable future for cocoa, forests are vital. Not only do they help to improve biodiversity and mitigate against climate change, they also help to improve cocoa yields and raise farmer incomes. By improving tree cover on their farms, cocoa farmers can increase the yields and life expectancy of their cocoa trees, as well as generate additional income from more diverse crops.

The benefits of forest protection and restoration are clear, but we also need to create the right economic incentives. As farmers have struggled to earn an income from their cocoa smallholdings, they have often resorted to clearing more land. At Olam Food Ingredients (OFI), we’re working to change that. Over the past year, we have worked in partnership with customers and governments to distribute and plant forest and fruit trees in Ghana and Côte d’Ivoire. We have trained farmers in agronomy and agroforestry to help them improve yields through their existing land. And we have supported farming communities through skills training and Village Savings and Loan Associations.

We are seeing positive results. According to the recent report by the UN Convention on Biological Diversity, the rate of forest loss from 2018 to 2019 in Côte d’Ivoire and Ghana has halved. The Cocoa & Forests Initiative (CFI) is a blueprint for how engaging different stakeholders on an agreed framework for action across the supply chain – from the private sector to origin governments, supported with vital donor funding – can propel us towards a sustainable cocoa future.

Never has the need for action been more pressing. The impact of climate change and biodiversity loss is becoming ever clearer in every aspect of our lives. There is still much more to do and, in this year of climate action, now is the moment to build on our progress in reversing forest loss and degradation in the cocoa supply chain.

OFI remains a committed partner of CFI and of the governments of Ghana and Côte d’Ivoire. We are pleased to share our progress to date, achieved in partnership with customers, and show the positive impact this is having on farming communities. We look forward to continuing our collaboration and accelerating progress towards a cocoa supply chain where the natural world is protected, communities are supported, and farmers are able to earn a living income.



THE COCOA & FORESTS INITIATIVE: COLLECTIVE ACTION TO END COCOA-RELATED DEFORESTATION

The governments of Côte d’Ivoire and Ghana and 35 leading cocoa and chocolate companies, representing 85% of global cocoa usage, have joined together in the Cocoa & Forests Initiative to end deforestation and restore forest areas. Their combined actions play a crucial role in sequestering carbon stocks in West African forests and addressing climate change, in line with the Paris Climate Agreement. The Cocoa & Forests Initiative delivers on Sustainable Development Goals 13 (Climate Action) and 15 (Life on Land).

The Cocoa & Forests Initiative is a public private partnership based on frameworks for action (Côte d’Ivoire and Ghana) and action plans for the private sector (Côte d’Ivoire and Ghana) and public sector (Côte d’Ivoire and Ghana) that spell out commitments to:

Protect and restore forests

Promote sustainable cocoa production and farmers’ livelihoods

Engage communities and boost social inclusion

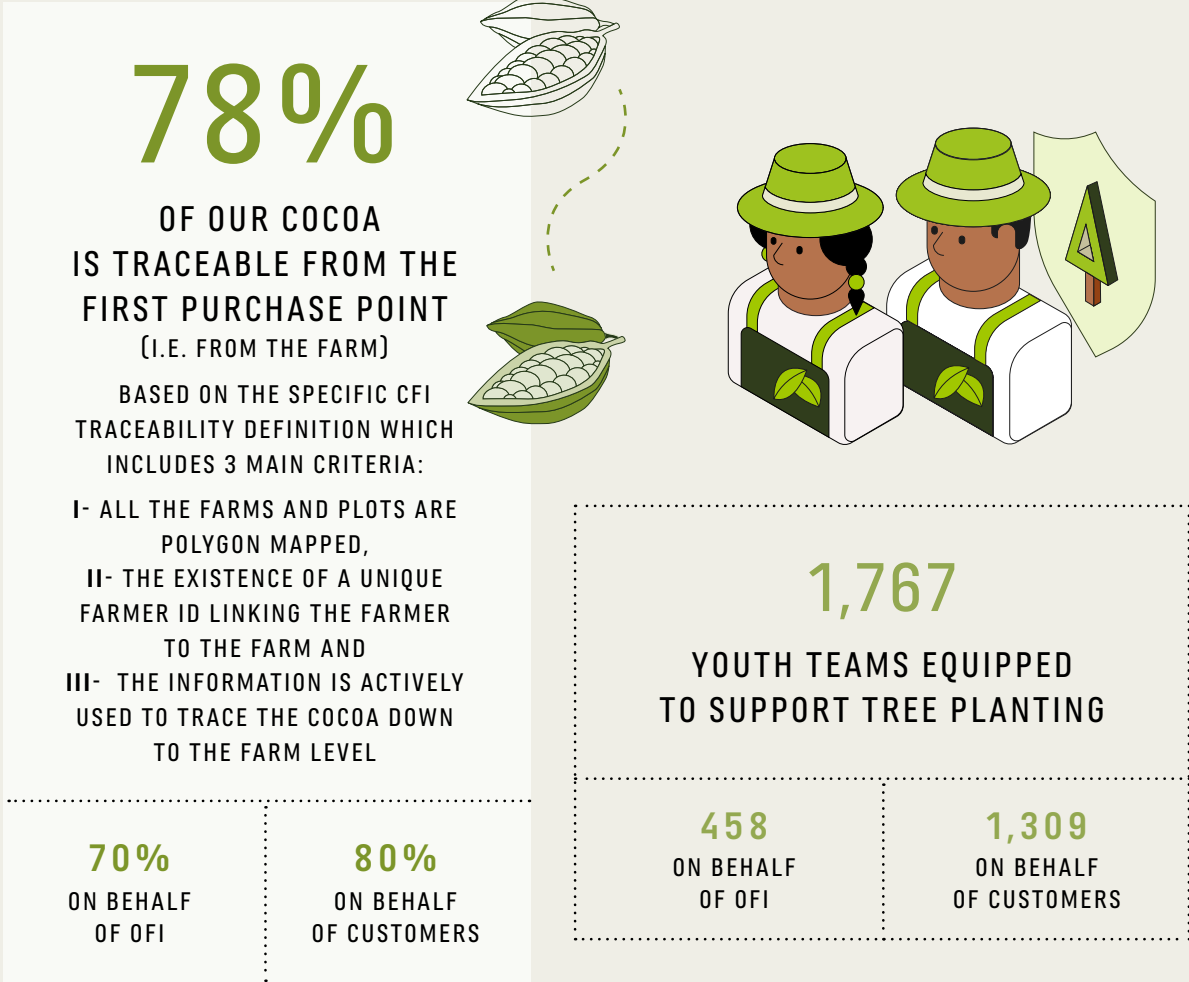
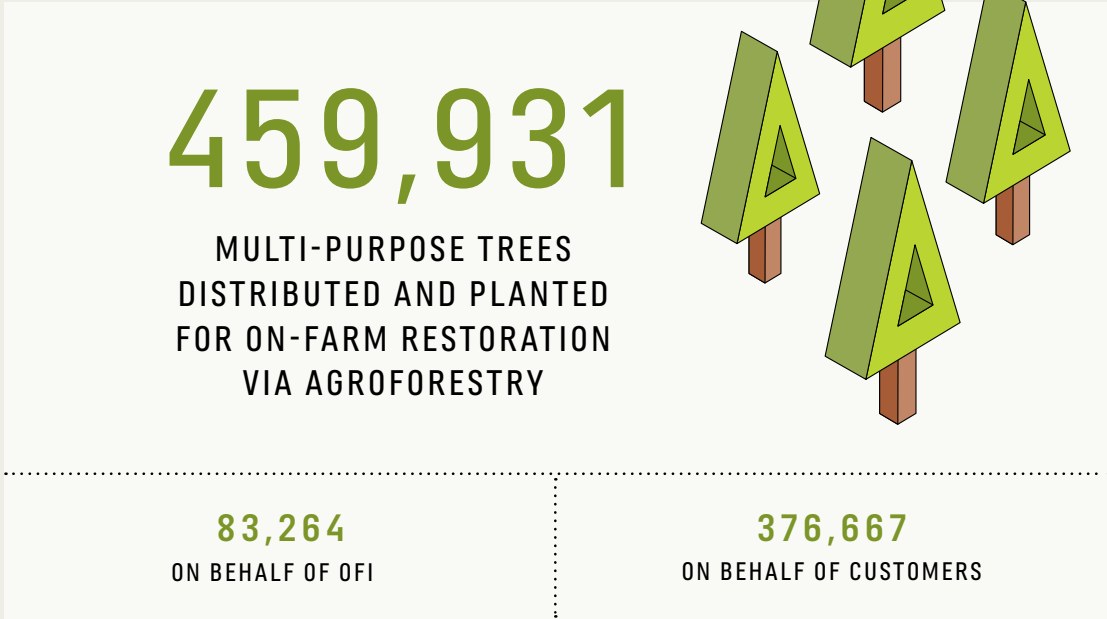


Our progress in 2020

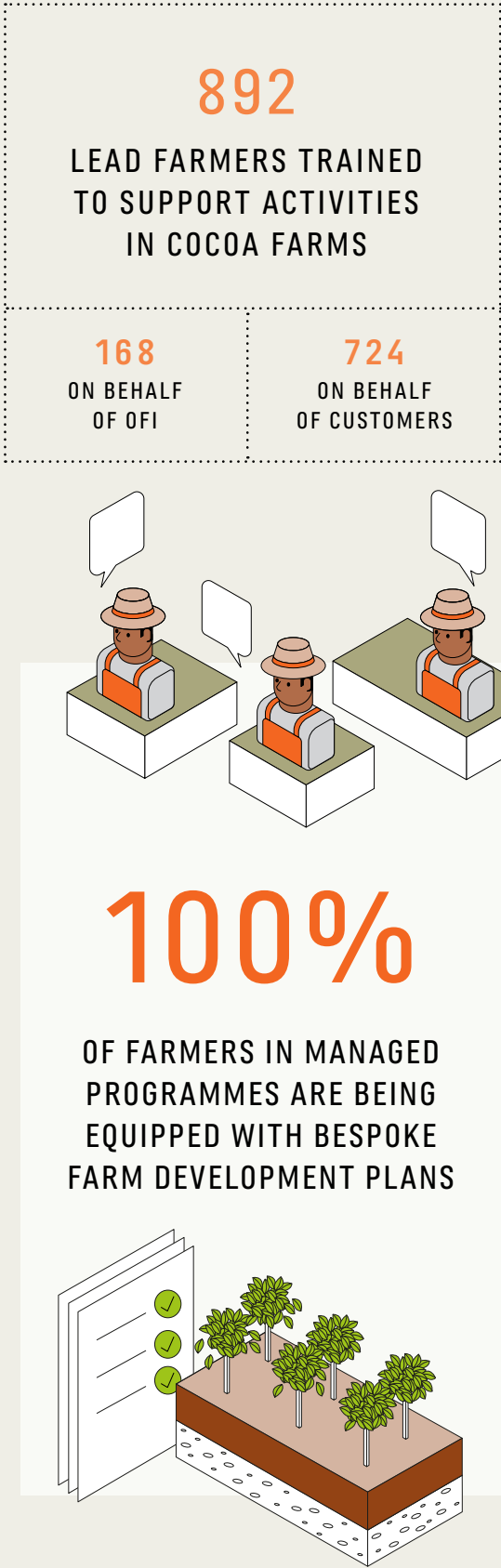


Côte d'Ivoire

FOREST PROTECTION AND RESTORATION



SUSTAINABLE PRODUCTION AND FARMER LIVELIHOODS



SOCIAL INCLUSION AND COMMUNITY ENGAGEMENT

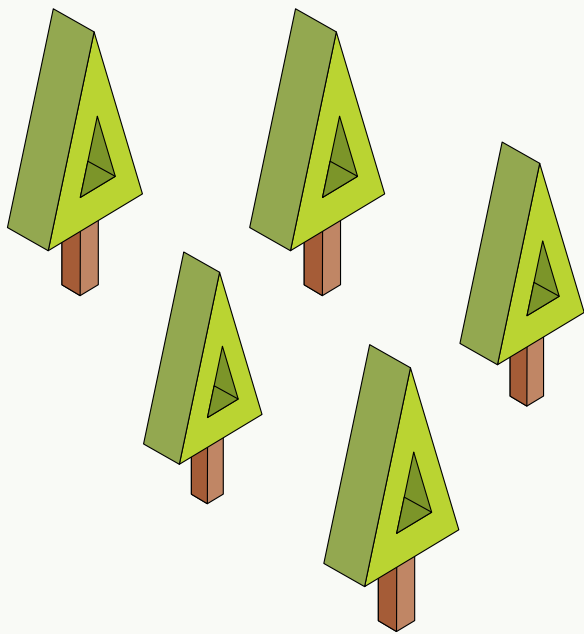


Ghana

FOREST PROTECTION AND RESTORATION

197,745

MULTI-PURPOSE TREES
DISTRIBUTED AND PLANTED
FOR ON FARM RESTORATION
VIA AGROFORESTRY



WITH A
95%
SURVIVAL RATE

31,000
ON BEHALF
OF OFI

166,745
ON BEHALF
OF CUSTOMERS

97%

OF OUR COCOA
IS TRACEABLE FROM THE
FIRST PURCHASE POINT
(I.E. FROM THE FARM)

BASED ON THE SPECIFIC CFI
TRACEABILITY DEFINITION WHICH
INCLUDES 3 MAIN CRITERIA:

- I- ALL THE FARMS AND PLOTS ARE
POLYGON MAPPED,
- II- THE EXISTANCE OF A UNIQUE
FARMER ID LINKING THE FARMER
TO THE FARM AND
- III- THE INFORMATION IS ACTIVELY
USED TO TRACE THE COCOA DOWN
TO THE FARM LEVEL

100%
ON BEHALF
OF OFI

96%
ON BEHALF
OF CUSTOMERS

50,036

FARMS MAPPED TO ENSURE
COCOA IS NOT BEING SOURCED
FROM FOREST LANDS, CLASSIFIED
FORESTS, NATIONAL PARKS
OR RESERVES

12,174
ON BEHALF
OF OFI

37,862
ON BEHALF
OF CUSTOMERS

SUSTAINABLE PRODUCTION AND FARMER LIVELIHOODS



14,898

FARMERS APPLYING
AGROFORESTRY
TECHNIQUES

3,975
ON BEHALF
OF OFI

10,923
ON BEHALF
OF CUSTOMERS

42,921

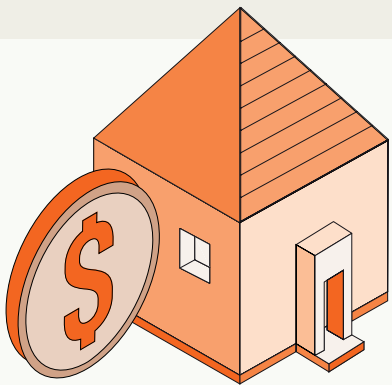
FARMERS TRAINED IN
GOOD AGRICULTURAL
PRACTICES

12,281
ON BEHALF OF OFI

30,640
ON BEHALF OF CUSTOMERS

11,163

FARMERS OFFERED
A FINANCIAL PRODUCT



6,689
ON BEHALF OF OFI

4,474
ON BEHALF OF CUSTOMERS

100%

OF FAMERS IN
MANAGED PROGRAMMES
ARE BEING EQUIPPED
WITH BESPOKE FARM
DEVELOPMENT PLANS

3,191

HAVE SAVINGS
ACCOUNTS



1,753
ON BEHALF OF OFI

1,438
ON BEHALF OF CUSTOMERS

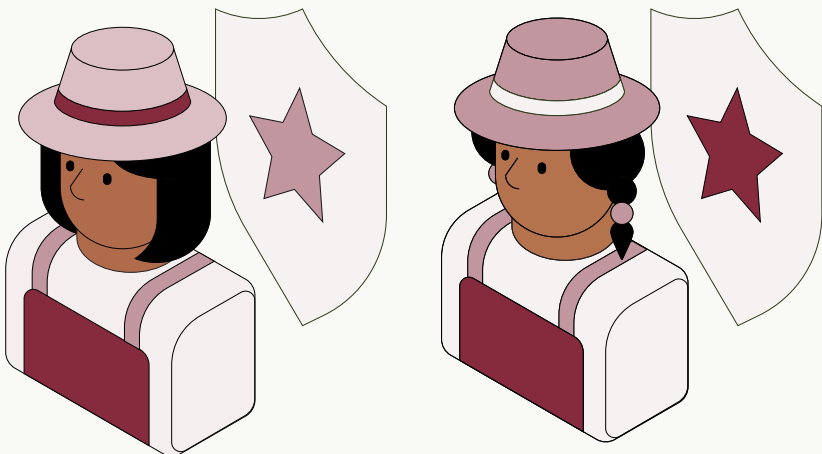
32,465

FARMERS PARTICIPATING
IN ADDITIONAL INCOME
GENERATING ACTIVITIES

10,099
ON BEHALF
OF OFI

22,366
ON BEHALF
OF CUSTOMERS

SOCIAL INCLUSION AND COMMUNITY ENGAGEMENT



580

WOMEN PARTICIPATING IN
EMPOWERMENT PROJECTS
AND ACTIVITIES

66
ON BEHALF OF OFI

514
ON BEHALF OF CUSTOMERS

32,685

FARMERS INFORMED, TRAINED,
OR CONSULTED ON FOREST POLICY AND
LAW ENFORCEMENT, FOREST PROTECTION,
AND RESTORATION

12,281
ON BEHALF
OF OFI

20,404
ON BEHALF
OF CUSTOMERS

Behind the figures

Since the founding of the Cocoa & Forests Initiative in 2018, OFI has been implementing its action plan to eliminate deforestation and work with farming communities that depend on cocoa for their livelihoods, both in Côte d’Ivoire and Ghana, and across our global cocoa supply chain.

Here we set out our actions and progress so far. All are aligned with Cocoa Compass, our sustainability ambition for the future of the cocoa sector. Cocoa Compass commits to challenging goals within our global, direct cocoa supply chain including 100% traceability, achieving living incomes for farmers, putting children first, and protecting and restoring forests.



Forest protection and restoration

Preventing forest loss and restoring existing cocoa landscapes is at the heart of our ambition to create a sustainable cocoa supply chain for both people and the planet. This requires timely and accurate information about what is happening on the ground, so that we can understand the areas most at risk of forest loss and tailor our actions accordingly.

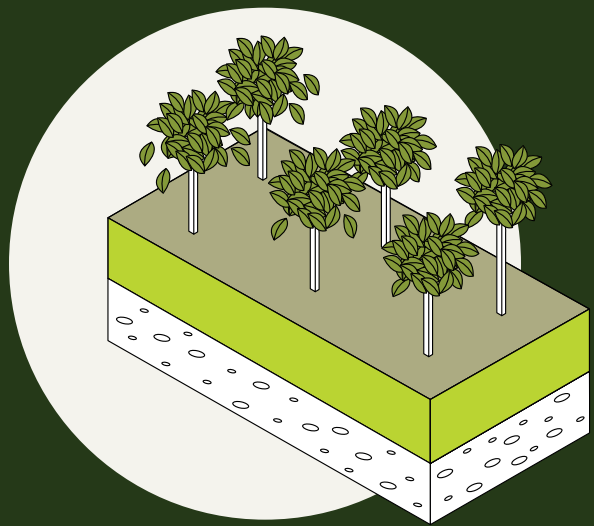
In 2020, we achieved our goal by putting in place 100% deforestation monitoring across our global, direct supply chain, including Ghana and Côte d’Ivoire. Via our Forest Loss Risk Index (FLRI), we are now monitoring tree cover across our sourcing origins and can pinpoint the highest risk of deforestation. Where we identify instances of deforestation, we work with farmers to understand why and create a timebound action plan, including sensitisation training on deforestation and agroforestry.

In Côte d’Ivoire, we are co-managing the planned restoration of two classified forests, Rapides Grah and Haute Dodo, a combined area of more than 460,000 hectares. Field studies are currently underway to develop

long-term management plans. This will include working with our customers to encourage agroforestry and rehabilitate degraded land in the region.

We are also working with cocoa growing communities to restore degraded land. Together with our customers, we promote agroforestry in all our managed programmes, supporting farmers to plant forest and fruit trees alongside cocoa. This helps to restore lost tree cover as well as improve cocoa productivity for farmers and provide them with an additional source of income. As a result of this, 657,676 new forest and shade trees were planted in the last year across Côte d’Ivoire and Ghana.

IN CÔTE D’IVOIRE, WE ARE CO-MANAGING THE PLANNED RESTORATION OF TWO CLASSIFIED FORESTS



460,000
HECTARES OF COMBINED
FOREST AREA

STORIES FROM GHANA



EMMANUEL, COCOA FARMER, GHANA

“I HAVE ALREADY EARNED USD13,000,
EVEN THOUGH THE CURRENT COCOA
SEASON IS NOT OVER”

EMMANUEL

COCOA FARMER, GHANA

Emmanuel Danso, 46, is a cocoa farmer in the Twifo Ati- Morkwa District of Twifo Praso in Ghana. He is married with seven children and has an 11-hectare cocoa farm that he inherited from his father several decades ago.

Emmanuel struggled to earn a living income from his farm. His cocoa trees were old, producing only 345g of cocoa per hectare, and he battled problems with pests and diseases. He knew he needed to regenerate his farm but didn’t have the training or support to do so.

In 2014, he joined one of our sustainability programmes. With personalised coaching on pruning techniques, help setting up a shade tree nursery and the provision of fertiliser, he has started to rehabilitate his land. He is also diversifying his income by planting food crops alongside his cocoa, improving the soil fertility and micro-climate conditions of the farm. As a result, Emmanuel has increased his yields to 710kg of cocoa per hectare. He says, “I have already earned USD13,000, even though the current cocoa season is not over”. In total, he expects to earn 30% more than last year.

He still faces challenges, including market access for his food crops and changing rainfall patterns due to climate change. But he can now cover basic costs such as food, clothes, healthcare and educational fees for his household.



ADÈLE

COCOA FARMER, CÔTE D'IVOIRE

Adèle Bonzou Gnankon, 47, is a cocoa farmer in N'Dramankro, a village in the sub-prefecture of Niablé. She started growing cocoa 15 years ago as a means of providing for her family but lacked knowledge of how to best maintain her farm. Since she joined a local cooperative, Olam Food Ingredients and its partner Cooperative Abotré have been providing her with technical advice and support. Adèle has been able to attend training sessions on Good Agricultural Practices, with a focus on agroforestry techniques to help counter the effects of climate change. “I have benefited a lot from the training and also from the coaching sessions carried out by the lead farmers,” she says, “Now, I know exactly the area of my cocoa farm thanks to mapping and my work is easier because I have a Farm Development Plan.”

Introducing new agroforestry techniques has also significantly increased the amount of cocoa Adèle’s farm can produce. “Four years ago, my yield was 375 kg/ha. For the 19-20 season, I reached 645 kg/ha,” she says. With continued support from the lead farmers, she is hoping to increase this even more.

Alongside training in cocoa farming techniques, Adèle has also attended sessions on ways to diversify her income. She is now using some of her land to grow other crops like maize, banana, cassava and okra, providing her with an additional income that helps provide for her four children.

STORIES FROM CÔTE D'IVOIRE



ADÈLE BONZOU GNANKON, COCOA FARMER, CÔTE D'IVOIRE

“FOUR YEARS AGO, MY YIELD WAS 375 KG/HA. FOR THE 19-20 SEASON, I REACHED 645 KG/HA”



Sustainable production and farmer livelihoods

Deforestation is often driven by economic incentives. When farmers are unable to earn a decent living income from their cocoa smallholdings, many resort to clearing more land to increase their yield. By helping farmers improve their income from their existing land, we can not only protect forests, but also help make cocoa a viable career for future generations.

Often yields could be improved through simple farming techniques, but farmers may not have the necessary skills or resources. Last year we trained 66,051 farmers in Good Agricultural Practices (GAP) across Côte d’Ivoire and Ghana so they can improve productivity on their farms. This includes teaching pruning techniques to improve yields, encouraging farmers to diversify their farms and distributing forest and shade trees which enrich the soil and provide additional food or income.

In Ghana, for example, we are collaborating with Rainforest Alliance and Partnerships for Forests (P4F) to conserve the Sui River Forest Reserve by supporting over 10,000 farmers to increase their yields and incomes sustainably. Working with community members, we have introduced climate-smart agriculture on 18,300 hectares of land and set up a nursery to raise over 500,000 forest tree seedlings. We are

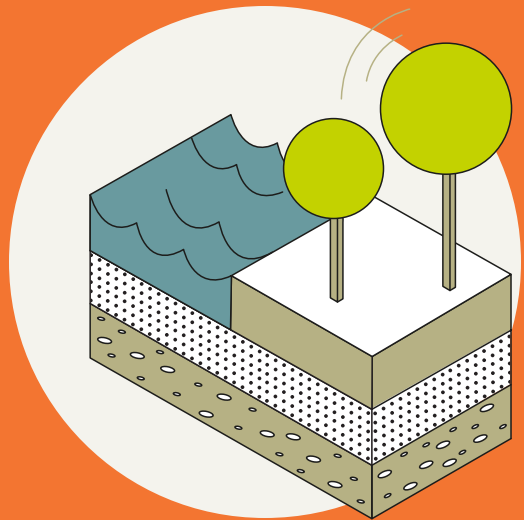
also assisting farmers to register their cocoa trees. 4,000 farmers have been able to secure proof of ownership, boosting their confidence to invest in their crop by planting more forest trees. That in turn improves yields and extends the life expectancy of the farm, creating a viable source of income for future generations. By the end of 2021, we expect to bring 155,000 hectares of land under sustainable management.

Duplicating the Ghana project’s success, under the UK funded Darwin Initiative we have enabled two farmer groups in South West Côte d’Ivoire to partner with Rainforest Alliance and the Centre d’Études, Formations, Conseils et Audits (CEFCA). Last year, we distributed 5,000 forest tree seedlings to local farmers and helped to set up land management committees in five villages to monitor use of natural resources in those communities. A Participatory Landscape Management Plan (PLMP) was developed, helping local communities to take responsibility for landscape management and build capacity to address the challenges and threats they face. We also trained 331 farmers on GAP, providing them with the knowledge and resources to improve the productivity of their farms, and supported farmers to diversify their income through activities like beekeeping and chicken breeding.

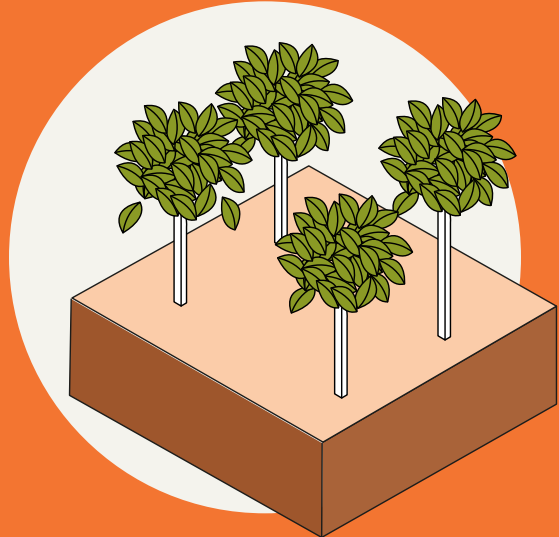
WE ARE COLLABORATING WITH
RAINFOREST ALLIANCE AND PARTNERSHIPS
FOR FORESTS (P4F) TO CONSERVE THE
SUI RIVER FOREST RESERVE IN GHANA



10,000+
FARMERS SUPPORTED TO
INCREASE THEIR YIELDS AND
INCOMES SUSTAINABLY



18,300
HECTARES OF LAND
USING CLIMATE SMART
AGRICULTURE



500,000
FOREST TREE SEEDLINGS
PLANTED IN A NURSERY

JOSHUA

COCOA FARMER, GHANA

Joshua Armoh, 30, is part of the programme run by OFI, Partnerships for Forests (P4F) and Rainforest Alliance in the Sui River Forest Reserve. Through the programme, he has received training on climate-smart agriculture and agroforestry techniques which will help him to increase his cocoa yields without harming the environment. He has also been supplied with tree seedlings, helping him to set up his own nursery.

Joshua also took part in the tree registration pilot, meaning he now has proof of ownership of over 30 cocoa trees which can produce good yields. As a result, he has increased his harvest from six bags of cocoa a year to ten, giving him an income that allows him to better support his household and with more certainty for the future.

JOSHUA HAS INCREASED HIS HARVEST
FROM SIX BAGS OF COCOA A YEAR TO TEN.

STORIES FROM GHANA



JOSHUA ARMOH, COCOA FARMER, GHANA



Social inclusion and community engagement

A sustainable future for cocoa means supporting not just the farmers we work with, but their families and the communities where they live.

Over the last year, we have continued to support community engagement and social inclusion projects that aim to economically empower members of cocoa farming communities. We have also helped farming communities to respond to the threat of Covid-19, donating over 55,000 face masks and over 13,000 bottles of hand sanitiser across Ghana and Côte d’Ivoire, constructing over 2,000 washing stations, and distributing vital public health information.

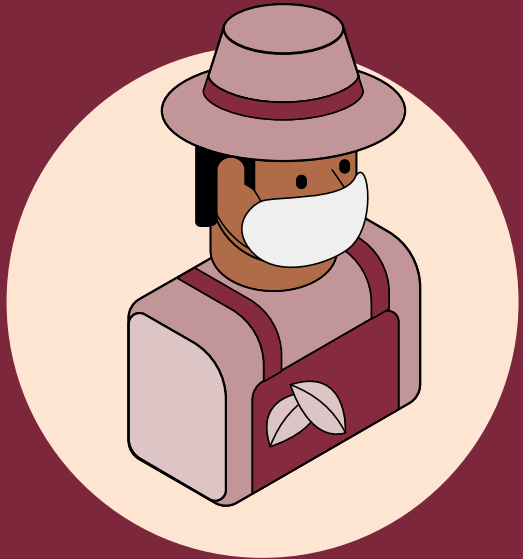
Many cocoa farmers are dependent on agriculture for their income. That can mean that money is tight during the off season, and it also leaves them exposed to the challenges of climate change impacting weather and crop yields. Together with our customers, we have run several projects aimed at helping communities to diversify their incomes. In Côte d’Ivoire, in partnership with our customers, CARE and VERT+, we have established Village Savings and Loan Associations (VSLAs), which give women access to funding to start their own microbusinesses and diversify their families’ income. To date, the project has seen

5,794 women benefit across 43 cocoa growing communities.

In Ghana, we recently trained 50 women from cocoa growing communities in Twifo Praso on how to produce and market products like soap, shower gel and hand sanitiser. Not only will this help to improve access to hygiene products and help to limit the spread of Covid-19, but it will also give the women an additional source of income to help them provide for their families.

We have continued our efforts to tackle child labour and ensure children of cocoa farmers have access to education, working with customers, partners, farmer groups and communities to deliver tailored programmes that put children first. A vital piece of the puzzle has been achieving child labour monitoring in all our managed programmes. With training and the help of a smartphone, community leads now collect detailed social data on communities and individual farming households, helping us to identify children at risk and tailor our interventions based on the issues identified.

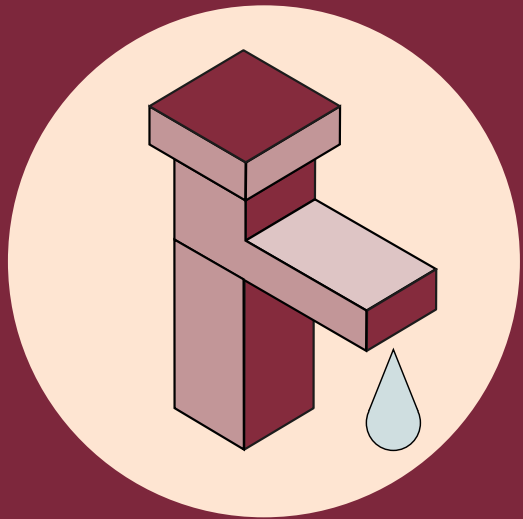
EXAMPLES OF URGENT SUPPORT PROVIDED TO COCOA COMMUNITIES IN GHANA AND CÔTE D’IVOIRE



55,000+
FACE MASKS
DONATED



13,000+
BOTTLES OF
HAND SANITISER
DONATED



2,000+
WASHING STATIONS
CONSTRUCTED

CATHÉRINE

HEAD OF WOMEN'S ASSOCIATION
AND VSLA MEMBER, CÔTE D'IVOIRE

Cathérine Moussa Gnombla lives in Behon-Gohouo in the Bangolo region, where her husband is chief of the village and she is responsible for its women's association. When OFI began training on Village Savings and Loan Associations (VSLAs) in 2018, she learnt how to create an association and strengthen it, as well as how to save money and take out loans to develop income generating activities.

Last year, Cathérine received 390,000 CFA Francs from her VSLA, which she invested in starting her own pig farm by constructing a pigsty and purchasing three pigs. Her VSLA also supported her with a loan of 150,000 CFA Francs to cover the costs of her farm, like feed.

The enterprise has proved successful and Cathérine is now looking forward to the birth of her first piglets. She is hoping to attend further training on how to market her products to customers and network to sell her pigs, and dreams of expanding her farm. "Thanks to the VSLA in my village, women have more opportunities to create their own activities and help their husbands with household expenses," she says.

STORIES FROM CÔTE D'IVOIRE



CATHÉRINE MOUSSA GNOMBLA, HEAD OF WOMEN'S ASSOCIATION
AND VSLA MEMBER, CÔTE D'IVOIRE

"THANKS TO THE VSLA IN MY VILLAGE,
WOMEN HAVE MORE OPPORTUNITIES TO CREATE
THEIR OWN ACTIVITIES AND HELP THEIR
HUSBANDS WITH HOUSEHOLD EXPENSES."



Looking to 2021 and beyond

3



We are encouraged by the tangible progress already made under the Cocoa & Forests Initiative. But at OFI, we know there is much more to do to protect and restore forests and improve farmer livelihoods.

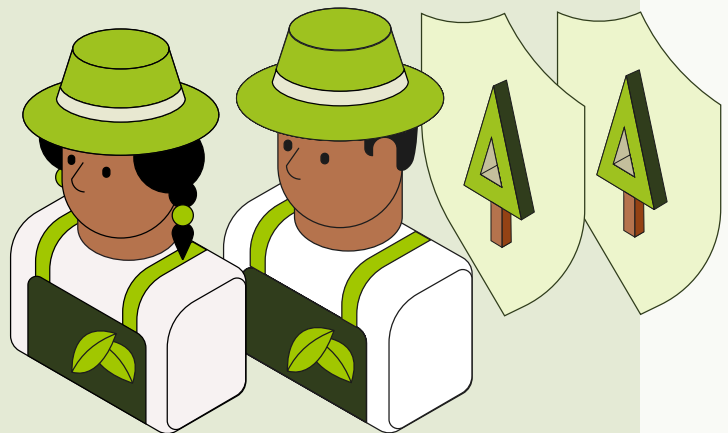
We will continue to do our part, working closely with the government and our customers. In particular, we will be focusing on the following actions over the next 12 months:

Côte d'Ivoire

39,572

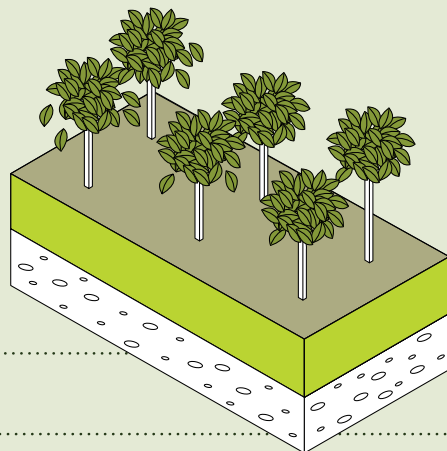
FARMERS TO BE TRAINED IN GOOD AGRICULTURE PRACTICES

to improve their cocoa yields and promote agroforestry techniques.



808,684

FOREST TREES TO BE DISTRIBUTED



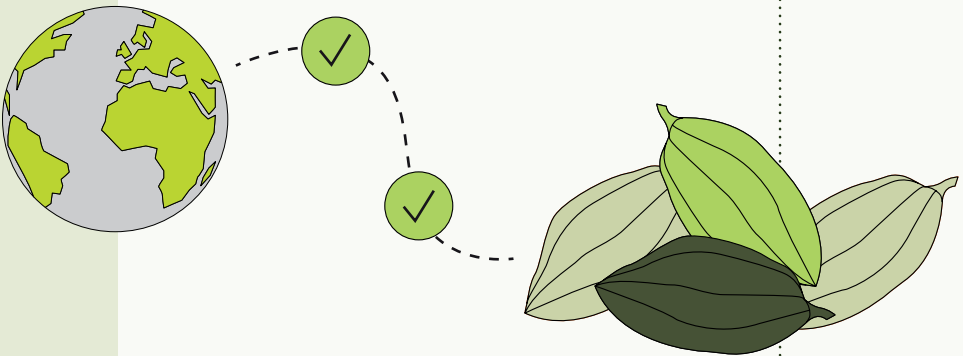
We will continue to educate communities on forest protection and distribute over 808,684 forest trees across

208

COCOA COOPERATIVES

We will also work closely with the government and our partners to finalise management plans to protect the Rapides Grah and Haute Dodo classified forests.

We will complete the GPS mapping of our entire direct supply chain to ensure cocoa is not being sourced from forest lands, national parks or forest reserves.



Ghana

32,250

FARMERS TO BE TRAINED IN GOOD AGRICULTURE PRACTICES

to improve their cocoa yields and 21,000 farmers promoting agroforestry techniques.

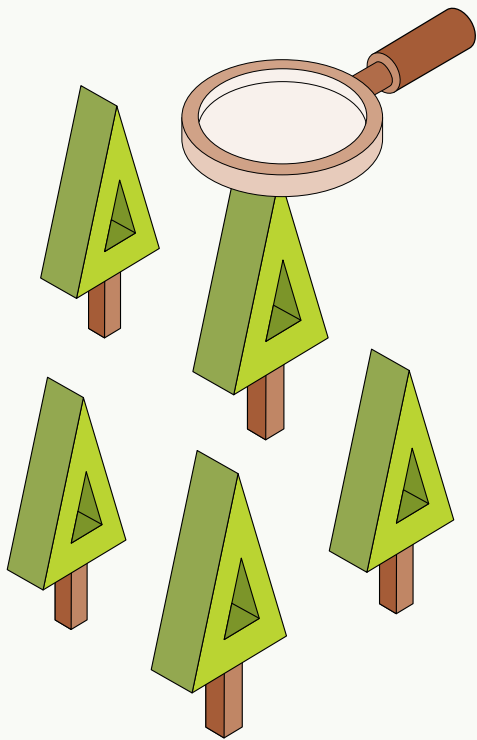
33,000

FARMERS TO BE TRAINED IN CLIMATE SMART COCOA

We will partner with government and other agencies to produce

1,000,000

HYBRID SEEDLINGS



500,000

FOREST TREES TO BE DISTRIBUTED

We will continue to educate communities on forest protection and distribute over 500,000 forest trees across 650 farming societies.

We will work closely with the government and our partners to collaborate on Hotspot Intervention Areas (HIA) in and around Kakum and Sui river forest.

Côte d'Ivoire

COMMITMENT	ACTIONS	INDICATOR	2022 TARGET	# THROUGH DIRECT INVESTMENT OCT 2019–SEP 2020	# ON BEHALF OF CLIENTS OCT 2019–SEP 2020	# TOTAL THROUGH DIRECT INVESTMENT SINCE 2018	# TOTAL ON BEHALF OF CLIENTS SINCE 2018
FOREST PROTECTION AND RESTORATION							
1. No further conversion of any forest land (as defined under national regulations, and using HCS and HCV methodologies) for cocoa production.	1.1 Conduct farm mapping within direct supply chain to identify and collect cocoa farm boundaries to ensure cocoa is not being sourced from forest lands, National Parks and Reserves, and Classified Forests	# of cocoa plots mapped in direct supply chain	37,944	14,933	76,509	17,693	78,238
		# and % of farms mapped in direct supply chain	TBD	14,269; 70%	71,850; 80%	14,389	72,935
	1.2 Conduct deforestation risk assessments in all direct sourcing areas	# of hectares in the direct supply chain with deforestation risk assessments completed	135,849	72,302	230,382	115,159	342,065
2. No sourcing of cocoa from National Parks and Reserves through companies’ traceable direct sourcing programs.	2.1 Implement traceability tools/technology to ensure no cocoa purchases originate from National Parks or Reserves (all forest areas)	% of directly sourced cocoa traceable from the farm to the first purchase point	100%	70%	80%		
3. A differentiated approach based on the level of degradation of forests for classified Forests will be developed and translated into a national forest restoration strategy	3.1 Support the restoration of Classified Forests by working with cocoa farmers, the government and the forestry industry to implement contracts for mixed agroforestry as a restoration and livelihoods intervention	# hectares restored in Classified Forests	TBD	TBD after the management plans of Haute Dodo and Rapide Grah (460,000 ha) have been drawn up and validated (August 2021)	TBD	TBD	TBD
4. Legal protection and management status for the remaining forests of Côte d'Ivoire in the Rural Domain	4.1 Support farmers with tree registration	# trees registered	n/a	n/a	n/a	n/a	n/a
	4.2 Support cocoa farmers to acquire land (tenure) documentation	# and % of farmers with land tenure agreements/ documentation etc. obtained via company support	TBD	0	0	0	0
			TBD	0	0	0	0
			TBD	0	0	0	0
5. Public enforcement of the new Forest Code and its subsequent guidelines, and public sector governance will be strengthened	5.1 Promote and participate in awareness-raising campaigns to educate farmers on the new Forest Code	# farmers informed, trained, and / or consulted on the new Forest Code, law enforcement, forest protection, and restoration	35,625	440	8,780		
			32,062	393	8,051		
			3,563	47	729		
6. Public-private collaboration to mobilize resources for forest protection and restoration	6.1 Mobilize finance for forest protection and restoration	# Individuals receiving PES: New		0	0	0	0
				0	0	0	0
				0	0	0	0
		# Individuals receiving PES: Total Active	TBD	0	0		
			TBD	0	0		
			TBD	0	0		

COMMITMENT	ACTIONS	INDICATOR	2022 TARGET	# THROUGH DIRECT INVESTMENT OCT 2019–SEP 2020	# ON BEHALF OF CLIENTS OCT 2019–SEP 2020	# TOTAL THROUGH DIRECT INVESTMENT SINCE 2018	# TOTAL ON BEHALF OF CLIENTS SINCE 2018
7. Public-private collaboration to identify good practices, technical guidance and incentive mechanisms for forest restoration and agro-forestry	7.1 Support distribution and planting of multi-purpose trees for on-farm restoration via agroforestry	# farmers applying agroforestry	TBD	2,775	15,305	9,202	32,112
			TBD	2,636	14,548	8,742	30,506
			TBD	139	757	460	1,606
		# multi-purpose trees distributed for on-farm planting	317,000	83,264	373,667	258,092	812,170
		# hectares cocoa agroforestry in development	10,566	2,775	15,141	9,202	35,635
	7.2 Support distribution and planting of native trees for off-farm restoration (reforestation)	# of trees distributed for off-farm planting	49,000	0	0	0	0
		# ha of forest area restored in rural zone	49	0	0	0	0
	7.3 Train farmers in CSC production including cocoa agroforestry systems	# farmers trained in CSC best practices	n/a	n/a	n/a		
			n/a	n/a	n/a		
			n/a	n/a	n/a		
8. Government creation, in collaboration with all stakeholders, of a public-private fund to support financing of protection and restoration of HCV forest areas.	8.1 Support the creation of the public-private forest conservation and rehabilitation fund	\$ contributed to fund	n/a	n/a	n/a	n/a	n/a
SUSTAINABLE PRODUCTION AND FARMERS' LIVELIHOODS							
9. Promote investment in long-term productivity of cocoa in environmentally suitable areas in order to grow “more cocoa on less land”	9.1 Distribute improved cocoa planting material	# improved seedlings distributed to farmers	n/a	n/a	n/a	n/a	n/a
	9.3 Train farmers in Good Agriculture Practices (GAPs)	# of farmers reached by GAP training programs	35,625	2,661	20,469		
			32,062	2,486	19,122		
			3,563	175	1,347		
10. Promote sustainable livelihoods and income diversification for cocoa farmers	10.1 Promote farm-level crop diversification	# individuals participating in additional Income Generating Activities (IGA's)	24,937	578	900		
			14,962	0	0		
			9,975	578	900		
	10.2 Support distribution and planting of multi-purpose trees for on-farm restoration via agroforestry	# multi-purpose trees distributed for on-farm planting	Already reported 7.1				
		# hectares of cocoa agroforestry					
11. Promote financial inclusion and innovation to deepen farmers’ access to working capital and investment funds for production and farm renovation	11.1 Offer financial products to farmers and promote farmer savings	# and % individuals in the current reporting year enrolled in a formal financial products and services (loans, insurance, digital payments, and savings [bank/mobile]) with support from companies (excluding cocoa bean pre-financing)	35,624	0	9,969		
			32,062	0	9,702		
			3,562	0	897		
		# of members of VSLA groups in the current year	24,937	709	7,441		
			2,494	11	242		
			22,443	698	7,199		
		# of VSLA groups in the current year	TBD	30	277		
12. Improve supply chain mapping, with the goal of 100% of cocoa sourcing traceable from farm to first purchase point. An action plan will be developed for traceability, which will be implemented step-by-step to achieve full traceability and verification, applicable to all by end-2019.	12.1 Conduct farm mapping within direct supply chain to identify and collect cocoa farm boundaries to ensure cocoa is not being sourced from forest lands, National Parks and Reserves, and Classified Forests	# of cocoa plots mapped in direct supply chain	Already reported 1.1				
	12.2 Implement traceability system to farm level in direct supply chain	% of direct sourced cocoa traceable from individual farms to first purchase point	Already reported 2.1				

COMMITMENT	ACTIONS	INDICATOR	2022 TARGET	# THROUGH DIRECT INVESTMENT OCT 2019–SEP 2020	# ON BEHALF OF CLIENTS OCT 2019–SEP 2020	# TOTAL THROUGH DIRECT INVESTMENT SINCE 2018	# TOTAL ON BEHALF OF CLIENTS SINCE 2018
SOCIAL INCLUSION AND COMMUNITY ENGAGEMENT							
13. Full and effective information sharing, consultation, and informed participation of cocoa farmers and their communities who are affected by proposed land-use changes.	13.1 Organize cocoa community consultations on the implementation of the Frameworks for Action	# farmers informed, trained, and / or consulted on the new Forest Code, law enforcement, forest protection, and restoration	Already reported 5.1				
14. Promote community-based management models for forest protection and restoration	14.1 Establish and/or support community-based natural resource management programs for forest restoration/ protection	# of cocoa communities with active forest restoration and protection program	TBD	n/a	n/a	n/a	n/a
		# hectares under CBNRM	TBD	n/a	n/a	n/a	n/a
15. Development of action plans for forest protection and restoration, and sustainable agricultural intensification that are gender and youth sensitive.	15.1 Develop forest protection & restoration and agriculture intensification action plans that are gender and youth sensitive	# of individuals participating in women’s empowerment projects and activities	TBD	148	332		
			TBD	0	0		
			TBD	148	332		
		# of individuals participating in youth focused projects and activities (age 15-35)	TBD	699	2,312		
			TBD	665	2,239		
			TBD	34	73		

Ghana

COMMITMENT	ACTIONS	INDICATOR	2022 TARGET	# THROUGH DIRECT INVESTMENT OCT 2019–SEP 2020	# ON BEHALF OF CLIENTS OCT 2019–SEP 2020	# TOTAL THROUGH DIRECT INVESTMENT SINCE 2018	# TOTAL ON BEHALF OF CLIENTS SINCE 2018
FOREST PROTECTION AND RESTORATION							
1. No further conversion of any forest land (as defined under national regulations, and using HCS and HCV methodologies for cocoa production.	1.1 Conduct farm mapping within supply chain to ensure cocoa is not being sourced from forest land	# of cocoa plots mapped in direct supply chain		13,585	43,422		
		# and % of cocoa farms mapped in direct supply chain	37,000	12,174; 100%	37,862; 96%	26,404; 100%	39,870; 100%
	1.2 Conduct deforestation risk assessments in all sourcing areas.	# of hectares in the direct supply chain with deforestation risk assessments completed	24,500	37,294	35,974	45,593	52,002
2. No production and sourcing of cocoa from National Parks, Wildlife Sanctuaries, and Wildlife Resource Reserves, except from farms with existing legal status.	2.1 Implement traceability tools/technology to ensure no cocoa purchases originate from National Parks, Wildlife Sanctuaries, and Wildlife Resource Reserves (all forest areas)	% of directly sourced cocoa traceable from the farm to the first purchase point	100%	100%	96%		
3. A differentiated approach for Forest Reserves will be adopted, based on level of degradation; with elimination of sourcing of cocoa in less degraded reserves (Cat.1) as of 31 December 2019; and production and sourcing for a period up to 25 years through MTS in more degraded reserves (Cat. 2).	3.1 Support farmers in Category 2 Forest Reserve areas in their restoration and reforestation programs	# hectares of Category 2 Forest Reserve areas restored:	0	0	0	0	0
4. In highly degraded off reserve forest lands, cocoa production and sourcing will continue, supported by climate smart cocoa and MTS.	4.1 Train farmers in off-reserve forest lands in CSC production including cocoa agroforestry systems	# farmers trained in CSC best practices	Total; 33,050	Total; 12,281	Total; 26,004		
			M	M; 8,542	M; 18,222		
			F	F; 3,739	F; 7,671		
	4.1 Train farmers in off-reserve forest lands in CSC production including cocoa agroforestry systems	# farmers trained in MTS	Total TBD TBD TBD	Total 0	Total 0		
			M	M; 0	M; 0		
			F	F; 0	F; 0		
5. Land and tree tenure reforms, and benefit sharing arrangement to incentivize land owners and users to retain naturally regenerated trees will be accelerated, including approval of CREMA mechanism.	5.1 Support farmers with tree registration	# trees registered	TBD	0	0	0	0
	5.2 Support cocoa farmers to acquire land (tenure) documentation	# and % of farmers with land tenure agreements/ documentation etc. obtained via company support	Total; 0	Total; 0	Total; 0	Total; 0	Total; 0
			M	M; 0	M; 0	M	M
			F	F; 0	F; 0	F	F
6. Public sector forest law enforcement and governance will be strengthened	6.1 Promote awareness-raising campaigns to educate farmers on forest law enforcement and tree tenure provisions	# farmers informed, trained, and / or consulted on forest policy/law enforcement, forest protection, and restoration	Total; 15,000	Total; 12,281	Total; 20,404		
			M	M; 8,542	M; 14,691		
			F	F; 3,739	F; 5,713		

COMMITMENT	ACTIONS	INDICATOR	2022 TARGET	# THROUGH DIRECT INVESTMENT OCT 2019–SEP 2020	# ON BEHALF OF CLIENTS OCT 2019–SEP 2020	# TOTAL THROUGH DIRECT INVESTMENT SINCE 2018	# TOTAL ON BEHALF OF CLIENTS SINCE 2018
7 . Public-private collaboration to mobilize new sources of funding for forest protection and restoration, and to incentivize farmers adoption of environmentally sustainable cocoa production will be developed.	7.1 Mobilize finance for forest protection and restoration	# Individuals receiving PES: New		Total; 0	Total; 0	Total; 0	Total; 0
				M; 0	M; 0	M; 0	M; 0
				F; 0	F; 0		
		# Individuals receiving PES: Total Receiving	Total; 0	Total; 0	Total; 0		
			M; 0	M; 0	M; 0		
			F; 0	F; 0	F; 0		
8. Public-private collaboration will be enhanced to identify good practices and technical guidance for forest conservation and restoration, shade grown cocoa, and MTS in Forest Reserves.	8.1 Support distribution and planting of multi-purpose trees for on-farm restoration via agroforestry	# farmers applying agroforestry	Total; 20, 833	Total; 3,975	Total; 10,923	Total; 2,125	Total; 4,712
			M	M; 2,156	M; 7,537	M	M
			F	F; 1,819	F; 3,386	F	F
		# multipurpose trees distributed for on-farm planting	500,000	31,000	166,745	51,000	103,249
		# hectares cocoa agroforestry in development	20,833	9,688	10,923	2,125	4,712
	8.2 Support distribution and planting of native trees for off-farm restoration (reforestation)	# of trees distributed for off-farm planting	0	0	0	0	0
		# hectares of forest area restored off-reserve	0	-	0	0	0
	8.3 Train farmers in Modified Taungya System (MTS)	# farmers trained in MTS	Already reported 4.2				
	SUSTAINABLE PRODUCTION AND FARMERS' LIVELIHOODS						
9. Promote investment in long-term productivity of high quality cocoa in environmentally sustainable manner and grow “more cocoa on less land.”	9.1 Distribute improved cocoa planting material	# improved cocoa seedlings distributed to farmers	3,700,000	310,750	1,571,000	1,002,510	1,735,233
	9.2 Train farmers and producer organizations in the latest Good Agriculture Practices (GAPs)	# of farmers reached by GAP training programs	Total; 32,250	Total; 12,281	Total; 30,640		
			M	M; 8,542	M; 21,448		
			F	F; 3,739	F; 9,192		
10. Promote sustainable livelihoods and income diversification for cocoa farmers.	10.1 Support distribution and planting of multi-purpose trees for on-farm restoration via agroforestry	# multipurpose trees distributed for on-farm planting	Already reported 8.1				
		# hectares cocoa agroforestry in development					
	10.2 Promote farm-level crop diversification	# individuals participating in additional Income Generating Activities (IGA's)	Total; 33,000	Total; 10,099	Total; 22,366		
			M	M; 7,109	M; 14,985		
			F	F; 2,990	F; 7,381		

COMMITMENT	ACTIONS	INDICATOR	2022 TARGET	# THROUGH DIRECT INVESTMENT OCT 2019–SEP 2020	# ON BEHALF OF CLIENTS OCT 2019–SEP 2020	# TOTAL THROUGH DIRECT INVESTMENT SINCE 2018	# TOTAL ON BEHALF OF CLIENTS SINCE 2018
11. Promote financial inclusion and innovation to deepen farmers’ access to working capital and investment funds required for production and cocoa farm rehabilitation and renovation.	11.1 Promote expansion of farmer savings	# and % individuals in the current reporting year enrolled in a formal financial products and services (loans, insurance, digital payments, and savings [bank/mobile]) with support from companies (excluding cocoa bean pre-financing)	Total; 33,000	Total; 6,689	Total; 4,474		
			M	M; 4,538	M; 3,087		
			F	F; 2,151	F; 1,387		
		# of members of VSLA groups in the current year	Total; 35,000	Total; 1,753	Total; 1,438		
			M	M; 131	M		
			F	F; 1,662	F; 1,438		
		# of VSLA groups in the current year	600	40	48	9	0
12. Improve supply chain mapping, with 100% of cocoa sourcing traceable from farm to first purchase point. An action plan will be developed that maps out key principles, steps, and milestones to achieve this step, encompassing all national and international traders.	12.1 Conduct mapping to identify and collect cocoa farm boundaries polygon data	# farms mapped within direct supply chain	Already reported 1.1				
	12.2 Implement traceability system to farm level in 100% of supply chain by end-2019	% cocoa supply traceable from individual farms to first purchase point	Already reported 2.1				
SOCIAL INCLUSION AND COMMUNITY ENGAGEMENT							
13. Full and effective information sharing, consultation, and informed participation of cocoa farmers and their communities who are affected by proposed land-use changes.	13.1 Organize cocoa community consultations on the implementation of the Frameworks for Action	# farmers informed, trained, and / or consulted on forest policy/law enforcement, forest protection, and restoration	Already reported 6.1				
14. Promote community-based management models for forest protection and restoration.	14.1 Establish and/or support community-based natural resource management (CBNRM) programs for forest restoration/protection	# of cocoa communities with active forest restoration and protection program	200	0	5	87	200
		# hectares under CBNRM		0	680.24		151
15. Development of action plans for forest protection and restoration, and sustainable agricultural intensification that are gender and youth sensitive.	15.1 Develop forest protection & restoration and agriculture intensification action plans that are youth and gender sensitive	# of individuals participating in women’s empowerment projects and activities	Total; 150	Total; 66	Total; 514		
			M	M	M; 14		
			F	F	F; 500		
		# of individuals participating in youth focused projects and activities (age 15-35)	Total; 150	Total; 0	Total; 36		
			M	M	M; 31		
			F	F	F; 5		

Thank you